

On your next visit to The Met, use this map for a seven-stop tour of highlights from *Metropolitan Stories*.



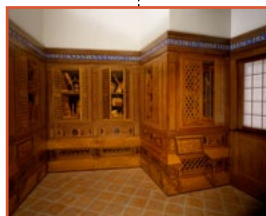
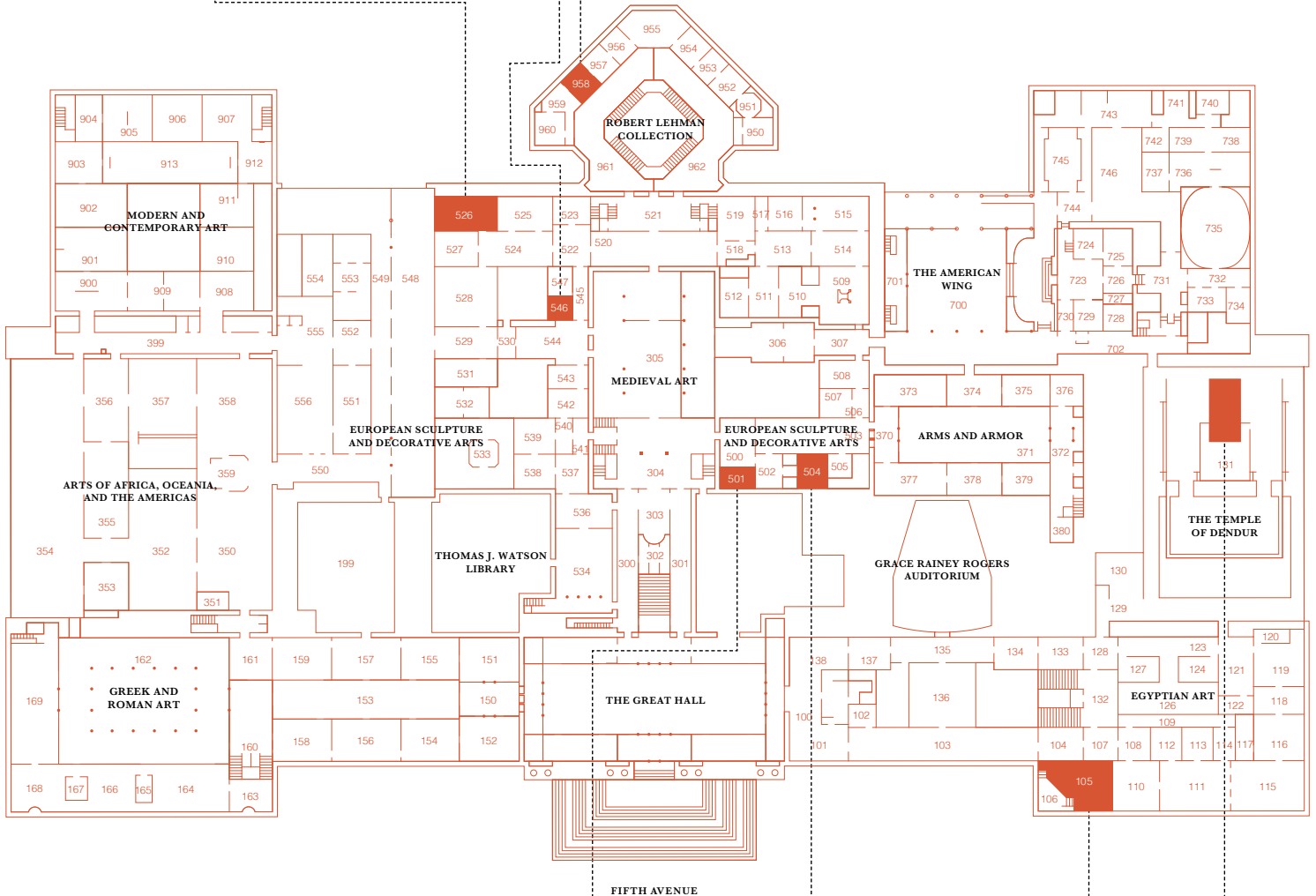
1. The fauteuil à la reine in *Chair as Hero* pp. 5–9, Gallery 526



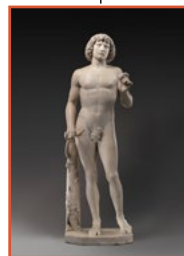
2. The room that inspired the paper room in *Papercuts*, pp. 235–238 Gallery 546



3. Melvin's discovery in *Lost*, pp. 131–134 Gallery 958



4. Moody's favorite room in *Where We Keep the Light*, pp. 206–207 Gallery 501



5. The statue in *Adam*, pp. 139–140 Gallery 504



6. The Egyptian Offering Bearer in *Meats & Cheeses*, pp. 56–57 Gallery 105



7. The graffiti on the Temple of Dendur in *Meats & Cheese*, p. 56 Gallery 131

All of these works of art are on the first floor of the Museum.